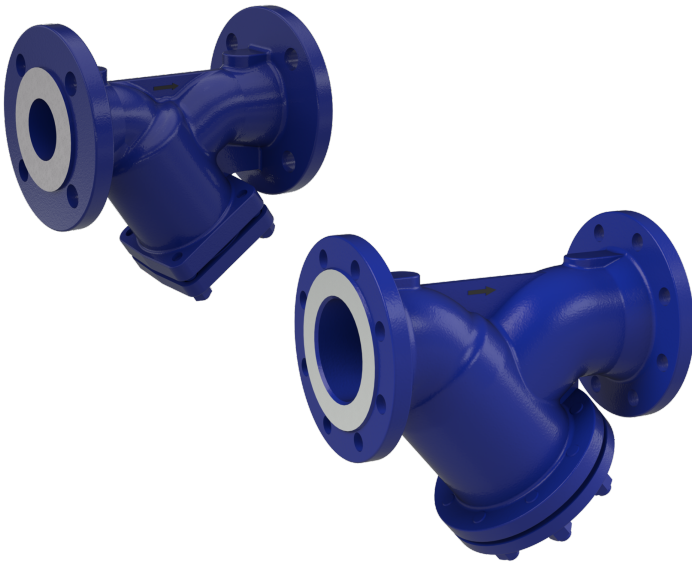


Flange-strainer for steam TYPE SZ07



description:

Strainers are used to clean a liquid or gaseous media.

This strainer can be used for temperatures up to **+300°C** – with that also for **steam** - based on used material and graphite-gasket

features:

- Suitable for high temperature (steam)
- Filtering of media
- Bolted bonnet with draining cap
- Removable stainless steel filter

connection:
DN15 – DN200

construction:
Y-design

pressure:
0 – 16 bar
see also pressure/temperature graph

<p>design:</p> <p>connection:</p> <p>body:</p> <p>filter:</p> <p>bonnet:</p> <p>bonnet gasket:</p> <p>studs / nut:</p> <p>draining cap:</p> <p>temperature:</p> <p>pressure:</p>	<p>Y-strainer</p> <p>flange PN10/16 R.F. acc. to EN 1092-2</p> <p>cast iron EN GJL-250 (GG25) with blue RAL 5002 painting</p> <p>stainless steel ASTM A182 F 304 (1.4301)</p> <p>cast iron EN GJL-250 (GG25)</p> <p>graphite</p> <p>8.8-A2A / 8-A2A</p> <p>C35E</p> <p>-10°C up to +300°C</p> <p>max. 16 bar (see also pressure/temperature graph)</p> <p>steam max. 10 bar</p>
--	---

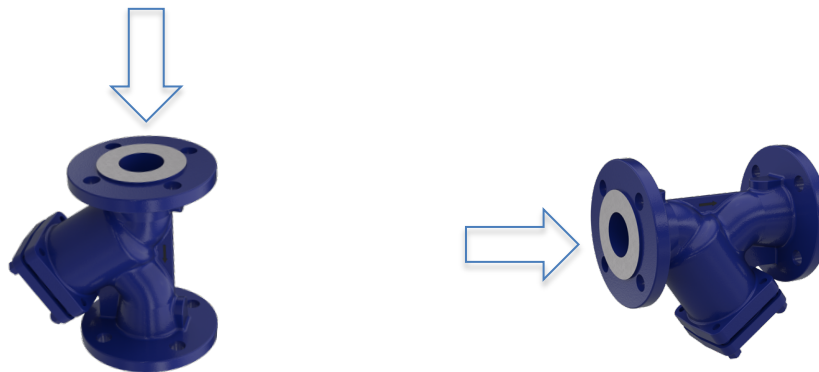
standards:

- fabrication according to ISO 9001: 2008
- DIRECTIVE 97/23/CE: CE N° 0062 – Risk category III Module H
- test acc. to EN 12266-1
- length acc. to EN 558 series 1 (DIN 3202 F1 – NF29354)

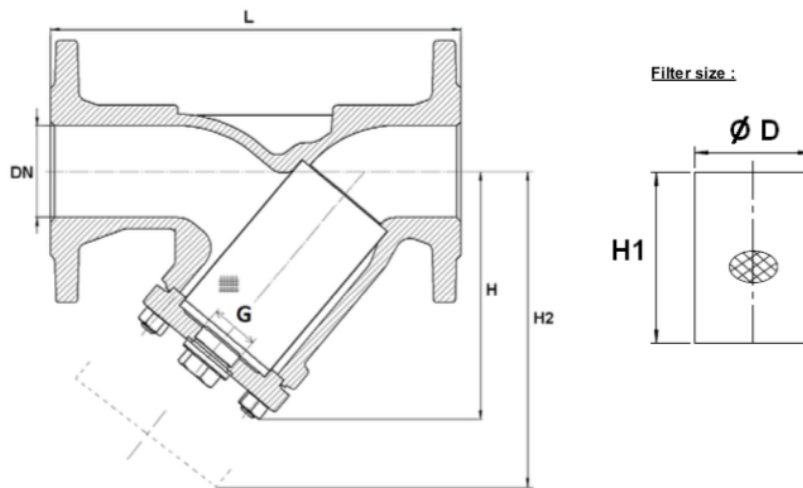
particularities:

- Horizontal or vertical position with descendant fluid
- mesh: DN15-DN50: 1mm / DN65-80: 1,25mm / DN100-200: 1,6mm
- blue RAL 5002 painting, 100 µm thickness

installation positions:

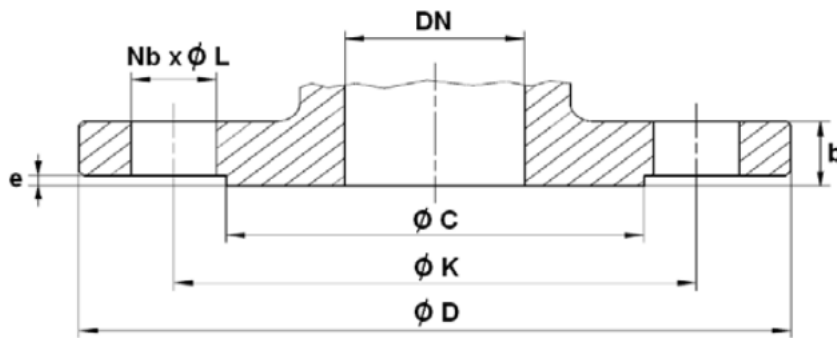


dimensions:



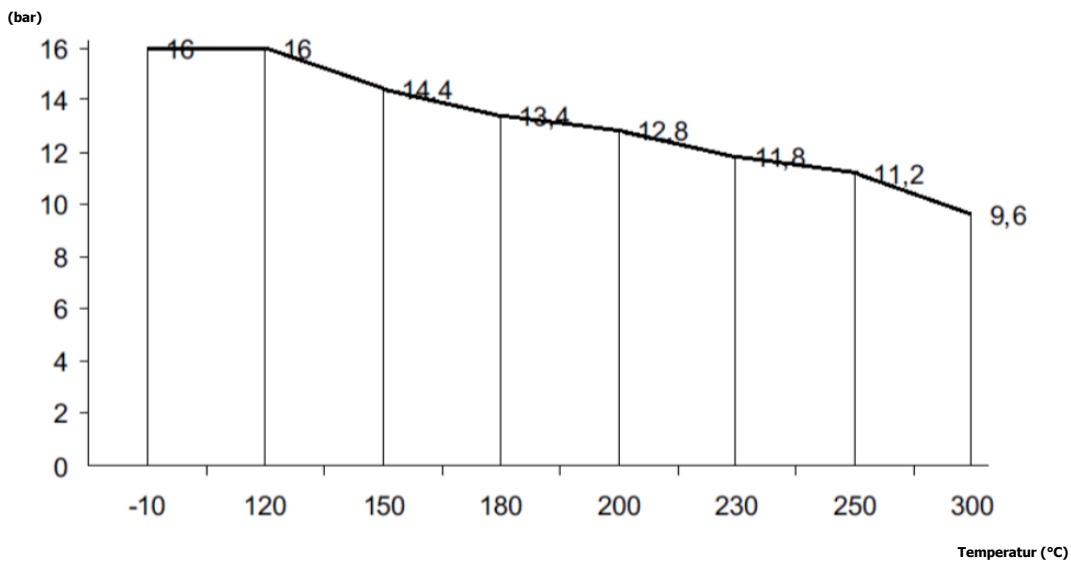
DN	L	H	H2	G	Ø D	H1	Mesh	Weight
	mm	mm	mm	inch	mm	mm	mm	kg
15	130	90	135	3/8"	23	56	1	2,6
20	150	100	150	3/8"	28	68	1	3,0
25	160	115	180	3/4"	36	82	1	4,3
32	180	135	215	3/4"	42	98	1	6,8
40	200	150	240	1"	50	114	1	8,8
50	230	155	250	1"	61,5	119	1	11,0
65	290	175	285	1"	78,5	134	1,25	14,6
80	310	205	330	1"	89,5	149	1,25	18,6
100	350	275	365	1 1/2"	109,5	169	1,6	27,0
125	400	325	425	1 1/2"	137,5	199	1,6	38,5
150	480	397	480	1 1/2"	160	224	1,6	54,5
200	600	535	610	1 1/2"	210	284	1,6	110,0

flange size PN10/PN16:

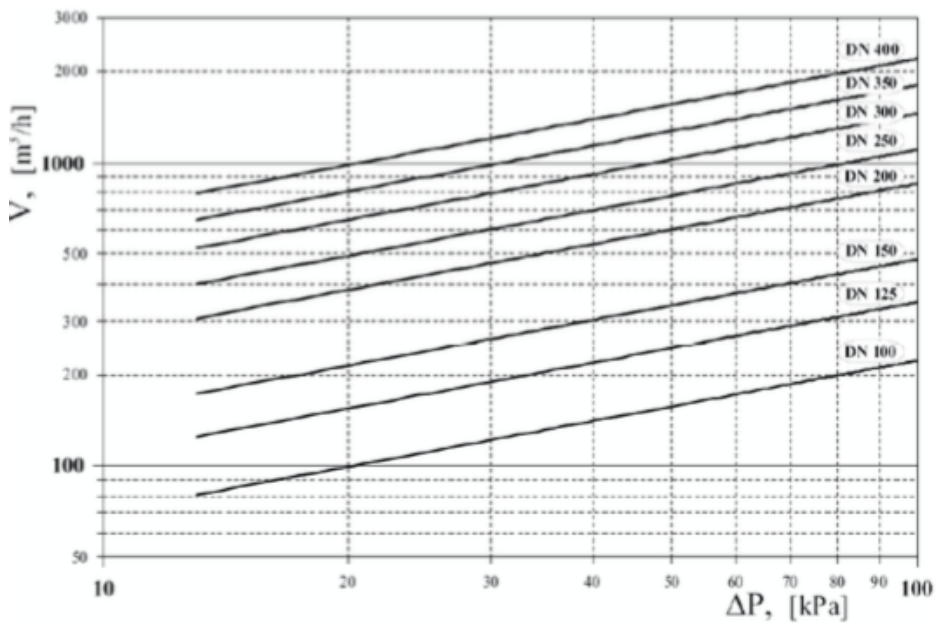
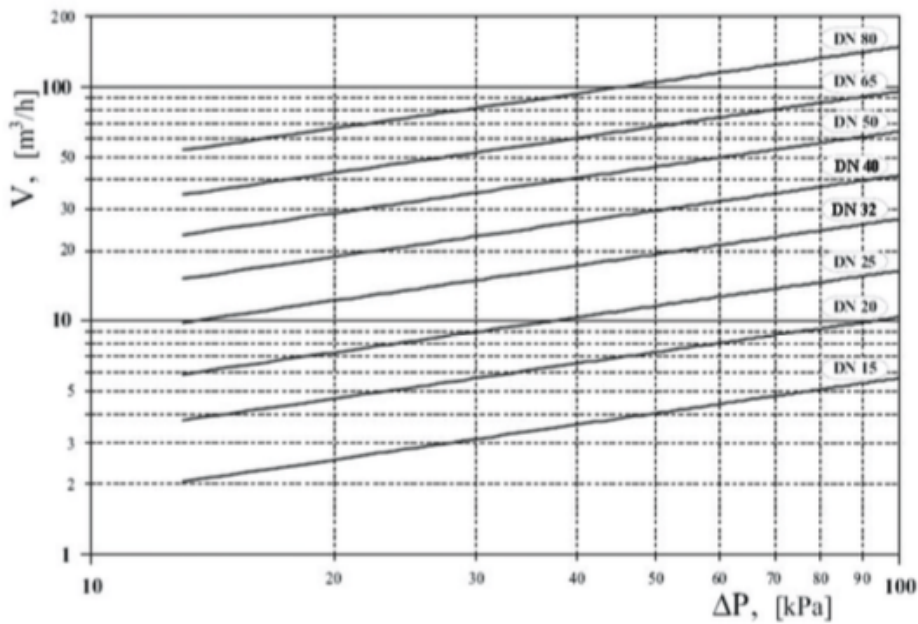


DN	PN	Ø C	Ø D	Ø K	Nb x Ø L	b	e
		mm	mm	mm		mm	mm
15	10/16	46	95	65	4 x 14	16	2
20	10/16	56	105	75	4 x 14	18	2
25	10/16	65	115	85	4 x 14	18	2
32	10/16	76	140	100	4 x 19	18	2
40	10/16	84	150	110	4 x 19	18	2
50	10/16	99	165	125	4 x 19	20	2
65	10/16	118	185	145	4 x 19	18	2
80	10/16	132	200	160	8 x 19	20	2
100	10/16	156	220	180	8 x 19	20	2
125	10/16	184	250	210	8 x 19	22	2
150	10/16	211	285	240	8 x 23	22	2
200	16	266	340	295	12 x 23	24	2

pressure / temperature graph (steam excluded!):



head loss:



flow coefficient Kvs:

DN	15	20	25	32	40	50	65	80	100	125	150	200
Kvs (m ³ /h)	5,7	10,4	16,4	27,3	42	64,7	98	149	234	376	454	853

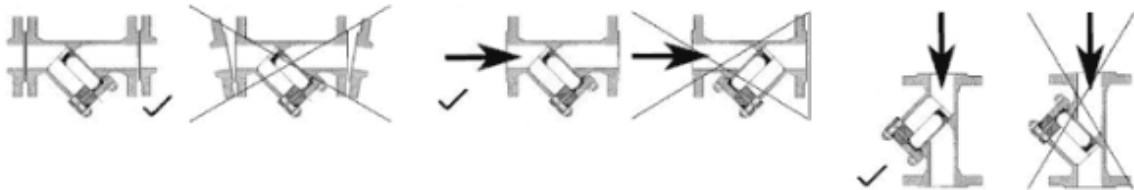
installation & maintenance:

general notes of safety:

- Only use the valve::
 - o for the specified purpose
 - o in satisfactory condition
 - o with respect for safety and potential hazards.
- Ensure that the strainers are appropriate for the conditions of the installation (type of fluid, pressure, temperature, ...).
- Always observe the installation instructions.
- All assembly work is to be carried out by authorized specialist staff.
- The installation should ensure that the function of strainers can be tested on a regular basis (at least two times a year).

installation instructions:

- The piping must be cleaned before installation of the strainer.
- The strainer must be fitted with the crees basket filters facing downwards in the direction of the flow (see arrow on the device casing).
- Make sure flanges are cleaned before installation.
- The screen is to be cleaned at regular intervals depending on the level of soiling caused by the respective medium. We recommend that shut-off valves are fitted on either side of the strainer in order to be able to clean the filter without having to completely empty the system.
- Ensure that media do not contain solid objects which can damage the seat.



article number:

type	material	flange	size
SZ07	00 – cast iron	00 – PN10/16*	03 – DN15 04 – DN20 05 – DN25 06 – DN32 07 – DN40 08 – DN50 09 – DN65 10 – DN80 11 – DN100 12 – DN125 13 – DN150 14 – DN200

*PN10/16 from DN15 up to DN150, PN16 at DN200

example no. SZ07000011:

SZ07 | **00** | **00** | **11**

flange-strainer made of cast iron

flange: PN10/16

size: DN100

Image similar, subject change without notice.