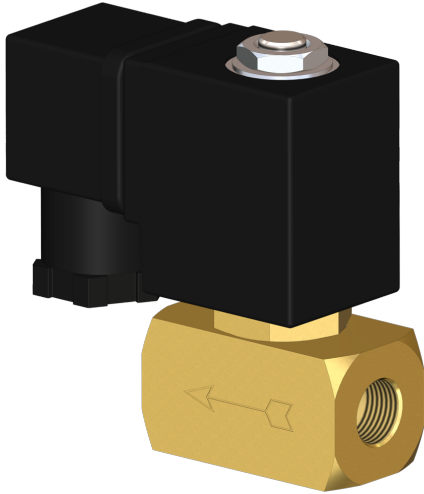


## 3/2-ways solenoid valve brass type MV08



**description:**

3/2-way solenoid valve made of brass, very compact design for high flow rates. Ideal for machine and plant engineering.

**product features:**

- suitable for **liquid & gaseous media**
- mounting position: any

**connection:**

1/4" inch

**control:**

direct acting

**function:**

NC – normally closed

**pressure:**

0 – 20 bar – depending on design

**design:**

seat valve

**diameter:**

DN 1,0 / DN 1,5 / DN 2,0 / DN 2,5

**body material:**

Brass

**seal:**

FKM, EPDM

**voltage:**

230V 50Hz                      24V DC

**voltage tolerance:**

+/- 10% acc. VDE 0580

**power consumption:**

230V 50Hz:                      15 VA  
24V DC                              18 Watt

**duty:**

100 % ED

**plug socket:**

IP65 is plug socket mounted acc. DIN EN 175301-803 Form A

**plug:**

cable diameter 8 mm, thread PG 9, design A

**temperature:**

ambient:                              max. + 50°C  
media:                                      FKM – 10°C up to 120°C  
    EPDM -10°C up to 120°C

**DN**

1,0 mm  
1,5 mm  
2,0 mm  
2,5 mm

**max. pressure**

0 – 11 bar  
0 – 9 bar  
0 – 8 bar  
0 – 6 bar

**connection**

G 1/4" inch  
G 1/4" inch  
G 1/4" inch  
G 1/4" inch

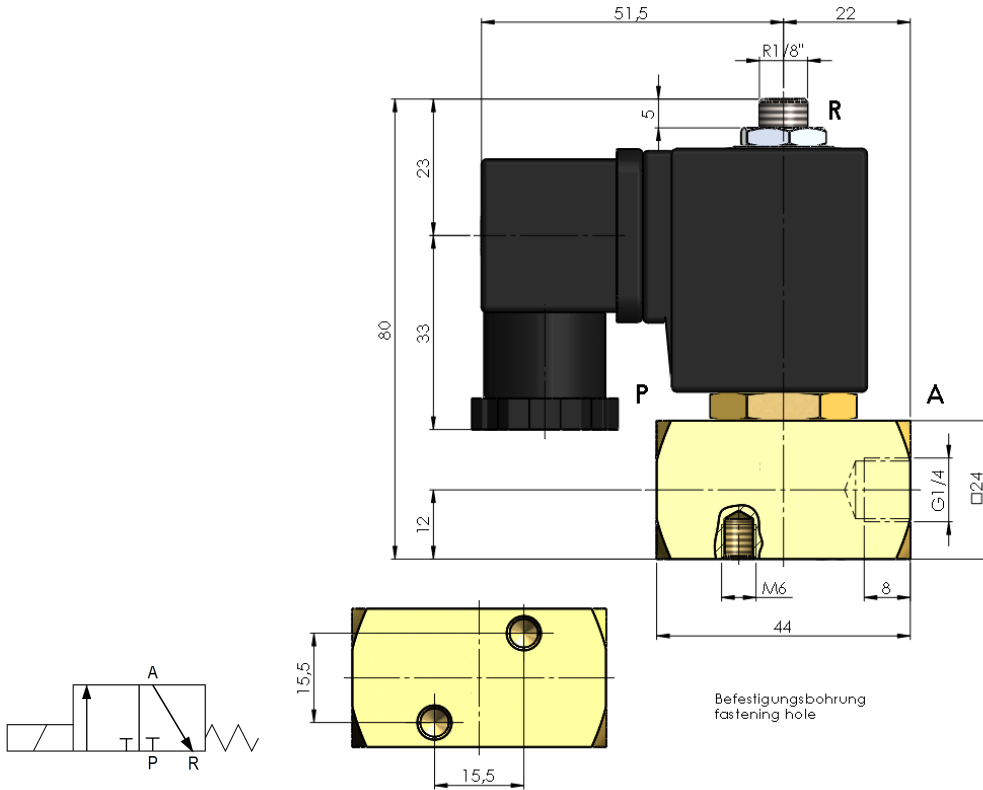
**flow rate**

0,7 l/min  
1,3 l/min  
2,3 l/min  
3,0 l/min

**options:**

free of oil and fat  
plug socket mounted with LED

dimensions:



Test meeting the requirement of PED acc. to DIN EN 12266-1:

The tightness corresponds to the specified leakage rates\*:

type	soft seat**
MV08	A

\* acc. to EN 12266-1

\*\* Soft Seat: EPDM, FKM

article number:

Type	Voltage	Seal	Function	Version	Size
<b>MV08</b>	<b>1 – 230V 50Hz</b> 2 – 24V DC	1 – EPDM <b>2 – FKM</b>	<b>0 – NC normally closed</b>	<b>0 – standard</b>	10 – DN 1,0 15 – DN 1,5 <b>20 – DN 2,0</b> 25 – DN 2,5

Example no. MV08120020:

<b>MV08</b>	<b>  1</b>	<b>  2</b>	<b>  0</b>	<b>  0</b>	<b>  20</b>
-------------	------------	------------	------------	------------	-------------

3/2 way solenoid valve  
 Voltage: 230V 50Hz  
 Seal: FKM  
 Function: NC normally closed  
 Version: standard  
 Size: DN 2,0

Image similar, subject change without notice.