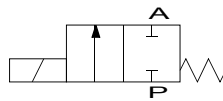
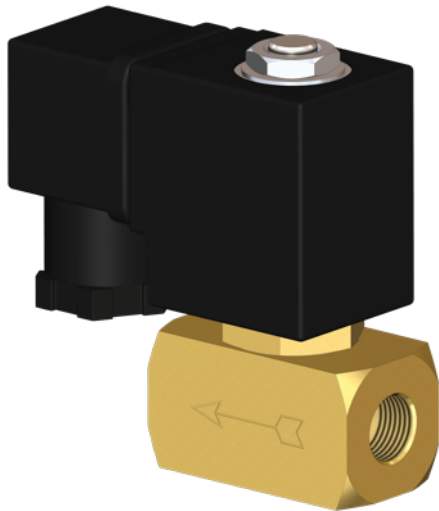


## 2/2-way solenoid valve brass type MV03



**description:**

2/2-way solenoid valve made of brass, very compact design for high flow rates. Ideal for machine and plant engineering. This valve switches at 0 bar. Direct acting valve.

**features:**

- Suitable for neutral, not neutral, **liquid & gaseous media**
- Mounting position: any, solenoid preferably above

**connection:**

1/4" inch

**control:**

direct acting

**function:**

NC – normally closed

**pressure:**

0 – 48 bar – depending on design

**design:**

seat valve

**diameter:**

DN 2,0 / DN 2,5 / DN 3,0 / DN 4,0 / DN 6,0

**body material:**

Brass

**seal:**

FKM, EPDM, NBR

**voltage:**

230V 50Hz            24V DC

**voltage tolerance:**

+/- 10% acc. VDE 0580

**power consumption:**

230V 50Hz:            15 VA  
24V DC                18 Watt

**duty:**

100 % ED

**plug socket:**

IP65 is plug socket mounted acc. DIN EN 175301-803 Form A

**plug:**

cable diameter 8 mm, thread PG 9, design A

**temperature:**

ambient:                Max. + 50°C  
media:                    FKM – 10°C up to 130°C  
                                 EPDM -10°C up to 120°C  
                                 NBR – 10°C up to 90°C

**DN**

2,0 mm  
2,5 mm  
3,0 mm  
4,0 mm  
6,0 mm

**max. pressure**

0 – 48 bar (38 bar\*)  
0 – 30 bar (24 bar\*)  
0 – 20 bar (16 bar\*)  
0 – 10 bar (8 bar\*)  
0 – 6 bar (4,8 bar\*)

**Connection**

G 1/4" inch  
G 1/4" inch  
G 1/4" inch  
G 1/4" inch  
G 1/4" inch

**flow rate**

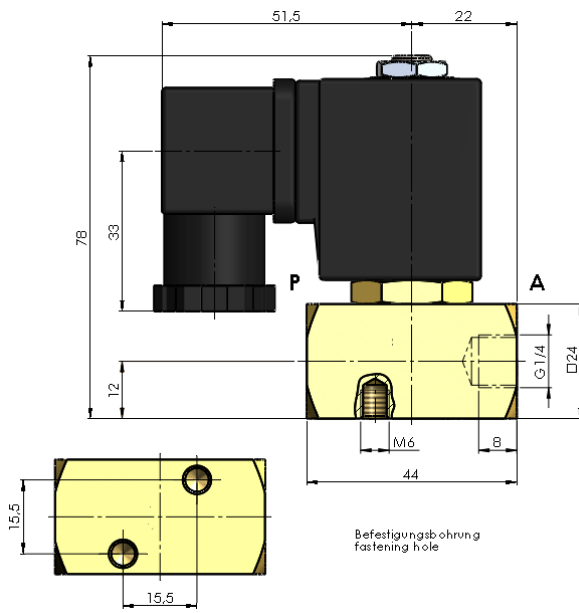
2,3 l/min  
3,0 l/min  
3,7 l/min  
6,5 l/min  
9,5 l/min

\* using DC reduces the working pressure

**options:**

without oil and fat  
plug socket mounted with LED

**dimensions:**



**Test meeting the requirement of PED acc. to DIN EN 12266-1:**

The tightness corresponds to the specified leakage rates\*:

type	soft seat**
MV03	A

\* acc. to EN 12266-1

\*\* Soft Seat: EPDM, FKM, NBR

**article number:**

Type	Voltage	Seal	Function	Version	Size
<b>MV03</b>	<b>1 – 230V 50Hz</b> 2 – 24V DC	1 – EPDM <b>2 – FKM</b> 4 – NBR	<b>0 – NC normally closed</b>	<b>0 – standard</b>	20 – DN 2,0 25 – DN 2,5 <b>30 – DN 3,0</b> 40 – DN 4,0 60 – DN 6,0

**Example no. MV03120030:**

<b>MV03</b>	<b>1</b>	<b>2</b>	<b>0</b>	<b>0</b>	<b>30</b>
-------------	----------	----------	----------	----------	-----------

2/2 way solenoid valve  
 Voltage: 230V 50Hz  
 Seal: FKM  
 Function: NC normally closed  
 Version: standard  
 Size: DN 3,0

Image similar, subject change without notice.