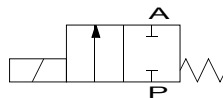


2/2-way solenoid valve brass type MV01



description:

2/2-way solenoid valve made of brass, very compact design for high flow rates. Ideal for machine and plant engineering. This valve switches at 0 bar (direct acting).

features:

- Suitable for **liquid & gaseous, neutral and not neutral media**
- Mounting position: any, solenoid preferably above

connection:
1/8" inch

control:
direct acting

function:
NC – normally closed

pressure:
0 – 16 bar – depending on design

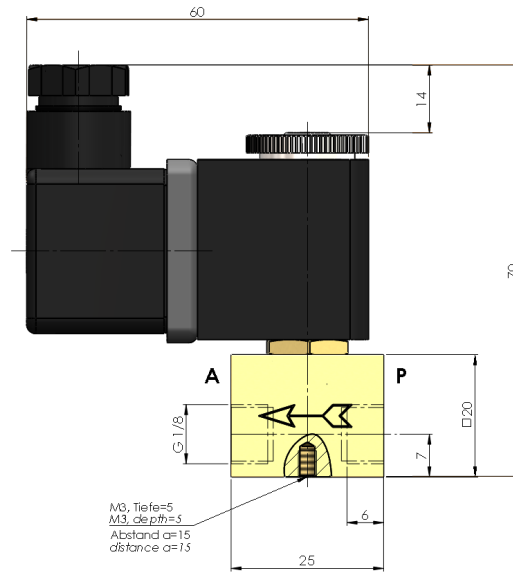
design:	seat valve
diameter:	DN 1,0 / DN 1,5 / DN 2,0 / DN 2,5
body material:	Brass
seal:	FKM
voltage:	230V 50Hz 24V DC
voltage tolerance :	+/- 10% acc. VDE 0580
power consumption:	230V 50Hz: 9,2 VA 24V DC 6 Watt
duty:	100 % ED
plug socket:	IP65 with plug socket mounted
plug:	cable diameter 6-8 mm, thread PG 9, design B
temperature:	ambient: max. + 50°C media: FKM – 10°C up to 130°C

DN	max. pressure	connection	flow rate
1,0 mm	0 – 16 bar	G 1/8" inch	0,5 l/min
1,5 mm	0 – 13 bar	G 1/8" inch	1,2 l/min
2,0 mm	0 – 10 bar	G 1/8" inch	2,1 l/min
2,5 mm	0 – 8 bar	G 1/8" inch	2,8 l/min

options: without oil and fat
 plug socket monted with LED
 Ex II 2G Ex mII T4
 II 3D IP65 T130°C



dimensions:



Test meeting the requirement of PED acc. to DIN EN 12266-1:

The tightness corresponds to the specified leakage rates*:

type	soft seat**
MV01	A

* acc. to EN 12266-1

** Soft Seat: FKM

Article number:

Type	Voltage	Seal	Function	Connection	Size
MV01	1 – 230V 50Hz 2 – 24V DC	2 – FKM	0 – NC normally closed	0 – 1/8" IG	10 – DN 1,0 15 – DN 1,5 20 – DN 2,0 25 – DN 2,5

Example no. MV01120010:

MV01 | **1** | **2** | **0** | **0** | **10**

2/2 way solenoid valve brass
Voltage: 230V 50Hz
Seal: FKM
Function: NC normally closed
Connection: 1/8" IG
Size: DN 1,0

Image similar, subject change without notice.