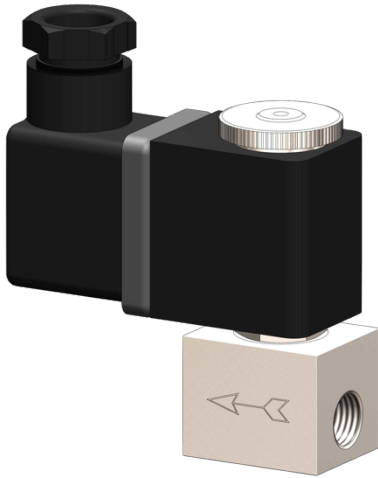


3/2-ways solenoid valve stainless steel type EV09



description:

3/2-way solenoid valve made of stainless steel, very compact design for high flow rates. Ideal for machine and plant engineering.

product features:

- suitable for neutral **liquid & gaseous media**
- mounting position: any, preferably solenoid above

connection:

1/8" Inch

control:

direct acting

function:

NC – normally closed

pressure:

0 – 12 bar – depending on design

design:

seat valve

diameter:

DN 1,0 / DN 1,5 / DN 2,0

body material:

stainless steel 1.4305

seal:

FKM

voltage:

230V 50Hz 24V DC

voltage tolerance:

+/- 10% acc. to VDE 0580

power consumption:

230V 50Hz: 9,2 VA

24V DC 6 Watt

duty:

100 % ED

plug socket:

IP65 is plug socket mounted

plug:

Cable diameter 6-8 mm, thread PG 9, design B

temperature:

ambient: Max. + 50°C

media: FKM - 10°C up to 130°C

DN

1,0 mm

1,5 mm

2,0 mm

max. pressure

0 – 12 bar

0 – 7 bar

0 – 4 bar

Connection

G 1/8" inch

G 1/8" inch

G 1/8" inch

flow rate

0,5 l/min

1,2 l/min

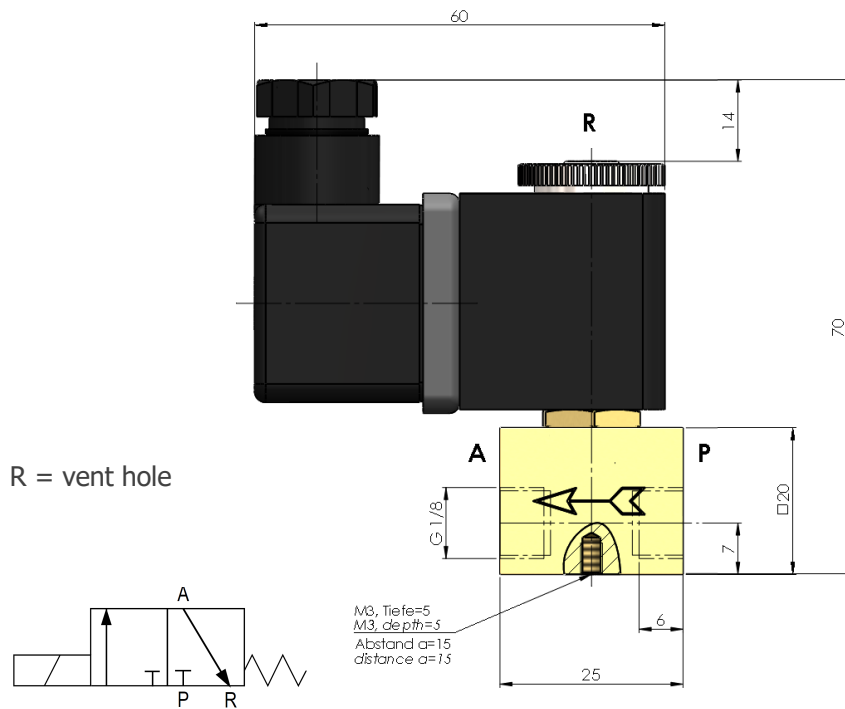
2,1 l/min

options:

without oil and fat

plug socket mounted with LED

dimensions:



Test meeting the requirement of PED acc. to DIN EN 12266-1:

The tightness corresponds to the specified leakage rates*:

type	soft seat**
EV09	A

* acc. to EN 12266-1

** Soft Seat: FKM

article number:

Type	Voltage	Seal	Function	Version	Size
EV09	1 – 230V 50Hz 2 – 24V DC	2 – FKM	0 – NC normally closed	0 – standard	10 – DN 1,0 15 – DIN 1,5 20 – DN 2,0

Example no. EV09120015:

EV09	1	2	0	0	15
-------------	----------	----------	----------	----------	-----------

3/2 way solenoid valve with 1/8" connection

Voltage: 230V 50Hz

Seal: FKM

Function: NC normally closed

Version: standard

Size: DN 1,5

Image similar, subject change without notice.