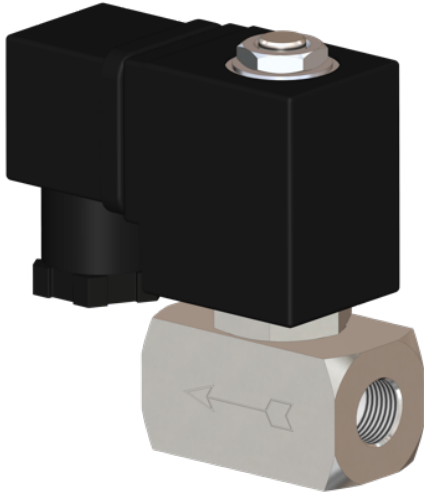


3/2-ways solenoid valve stainless steel type EV08



description:

2/2-way solenoid valve made of stainless steel, very compact design for high flow rates. Ideal for machine and plant engineering.

product features:

- suitable for **liquid & gaseous media**
- mounting position: any, preferably solenoid above

connection:

1/4" inch

control:

Direct acting

function:

NC – normally closed

pressure:

0 – 11 bar – depending on design

design:

seat valve

diameter:

DN 1,0 / DN 1,5 / DN 2,0 / DN 2,5

body material:

stainless steel 1.4305

seal:

FKM, EPDM

voltage:

230V 50Hz 24V DC

voltage tolerance:

+/- 10% acc. VDE 0580

power consumption:

230V 50Hz: 15 VA
24V DC 18 Watt

duty:

100 % ED

plug socket:

IP65 is plug socket mounted acc. DIN EN 175301-803 form A
cable diameter 8 mm, thread PG 9, design A

plug:

temperature:

ambient: max. + 50°C
media: FKM – 10°C up to +120°C
 EPDM -10°C up to +120°C

DN

1,0 mm
1,5 mm
2,0 mm
2,5 mm

max. pressure

0 – 11 bar
0 – 9 bar
0 – 8 bar
0 – 6 bar

Connection

G 1/4" inch
G 1/4" inch
G 1/4" inch
G 1/4" inch

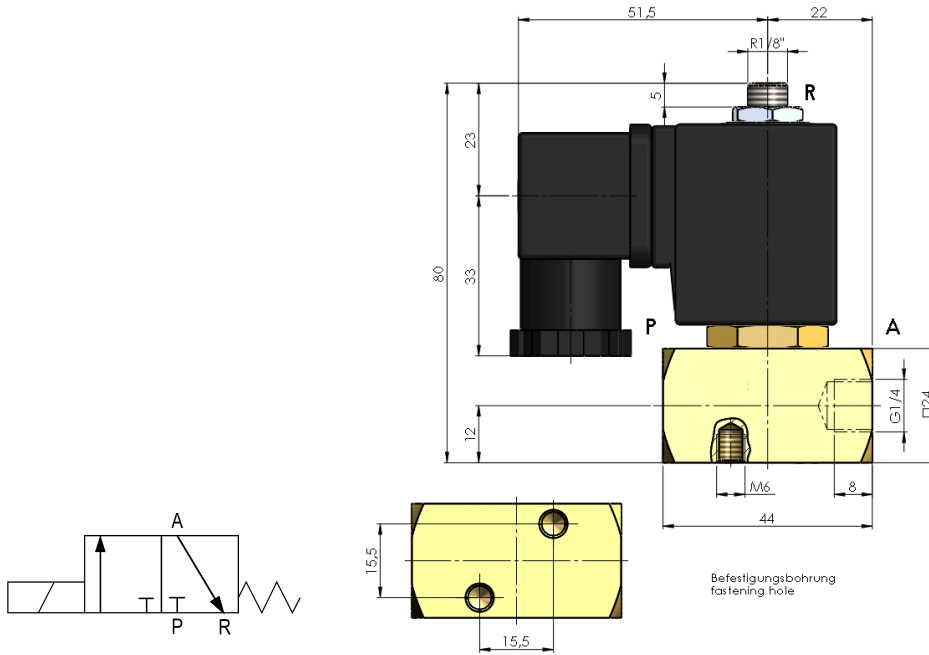
flow rate

0,7 l/min
1,3 l/min
2,3 l/min
3,0 l/min

options:

free of fat and oil
plug socket mounted with LED

dimensions:



Test meeting the requirement of PED acc. to DIN EN 12266-1:

The tightness corresponds to the specified leakage rates*:

type	soft seat**
EV08	A

* acc. to EN 12266-1

** Soft Seat: EPDM, FKM

article number:

Type	Voltage	Seal	Function	Version	Size
EV08	1 – 230V 50Hz 2 – 24V DC	1 – EPDM 2 – FKM	0 – NC normally closed	0 – standard	10 – DN 1,0 15 – DIN 1,5 20 – DN 2,0 25 – DN 2,5

Example no. EV08120015:

EV08	 1	 2	 0	 0	 15
-------------	------------	------------	------------	------------	-------------

3/2 way solenoid valve stainless steel with 1/4" connection

Voltage: 230V 50Hz

Seal: FKM

Function: NC normally closed

Version: standard

Size: DN 1,5

Image similar, subject change without notice.