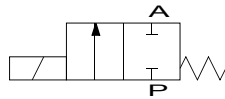
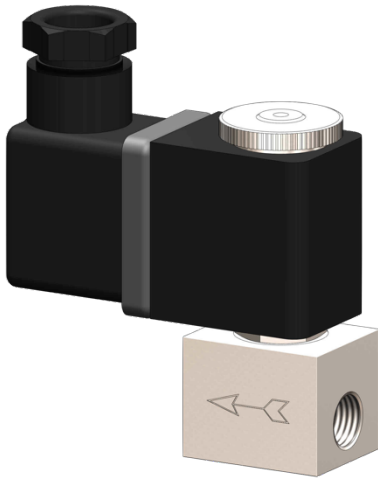


## 2/2-way solenoid valve stainless steel type EV01



**description:**

2/2-way solenoid valve made of stainless steel, very compact design for high flow rates. Ideal for machine and plant engineering. This valve switches at 0 bar (directly acting solenoid valve)

**features:**

- Suitable for **liquid and gaseous media**
- Mounting position: any, preferably solenoid above

**connection:**

1/8" inch

**control:**

direct acting

**function:**

NC – normally closed

**pressure:**

0 – 16 bar – depending on design

**design:**

seat valve

**diameter:**

DN 1,0 / DN 1,5 / DN 2,0 / DN 2,5

**body material:**

Stainless steel 1.4305

**seal:**

FKM

**voltage:**

230V 50Hz            24V DC

**voltage tolerance :**

+/- 10% acc. VDE 0580

**power consumption:**

230V 50Hz:            9,2 VA  
24V DC                    6 Watt

**duty:**

100 % ED

**plug socket:**

IP65 with plug socket mounted

**plug:**

cable diameter 6-8 mm, thread PG 9, design B

**temperature:**

ambient:                max. + 50°C  
media:                    FKM – 10°C up to +130°C

**DN**

1,0 mm  
1,5 mm  
2,0 mm  
2,5 mm

**max. pressure**

0 – 16 bar  
0 – 13 bar  
0 – 10 bar  
0 – 8 bar

**connection**

G 1/8" inch  
G 1/8" inch  
G 1/8" inch  
G 1/8" inch

**flow rate**

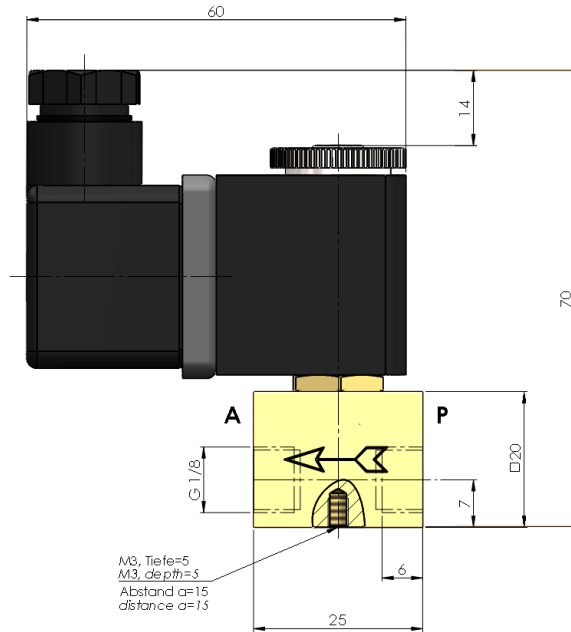
0,5 l/min  
1,2 l/min  
2,1 l/min  
2,8 l/min

**options:**

without oil and fat  
plug socket mounted with LED  
Ex                    II 2G Ex mII T4  
                         II 3D IP65 T130°C



dimensions:



Test meeting the requirement of PED acc. to DIN EN 12266-1:

The tightness corresponds to the specified leakage rates\*:

type	soft seat**
EV01	A

\* acc. to EN 12266-1

\*\* Soft Seat: FKM

article number:

Type	Voltage	Seal	Function	Version	Size
EV01	1 – 230V 50Hz 2 – 24V DC	2 – FKM	0 – NC normally closed	0 – Standard	10 – DN 1,0 15 – DN 1,5 20 – DN 2,0 25 – DN 2,5

Example No. EV01120010:

EV01 | 1 | 2 | 0 | 0 | 10

2/2 way solenoid valve stainless steel  
Voltage: 230V 50Hz  
Seal: FKM  
Function: NC normally closed  
Version: standard  
Size: DN 1,0

Image similar, subject change without notice.