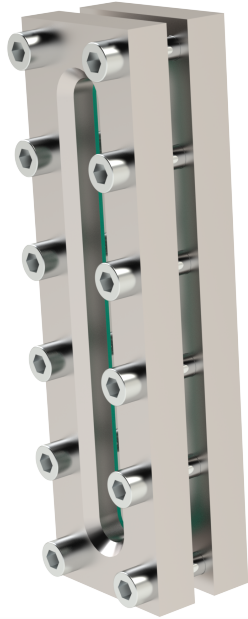


Sight glass fitting rectangular TYPE BS03



description:

Sight flow indicators are used for observation and to illuminate of optical control fluids and gases. E.g. tanks, silos, boilers...

features:

- suitable for neutral and non-neutral **liquids and gaseous media.**
- with borosilicate glass DIN 7080
- Delivery includes: Base- & cover flange, glass & sealing

Connection:

Length: 170, 220, 250, 310, 370, 500, 620, 740, 930

Design:

rectangular

Pressure:

max .16 bar

Design:

to be welded directly to tank

Material base-flange:

stainless steel 1.4571

Material cover-flange:

stainless steel 1.4571

Seal:

C4400

Glass:

borosilicate glass DIN 7081

Screws:

A4-70

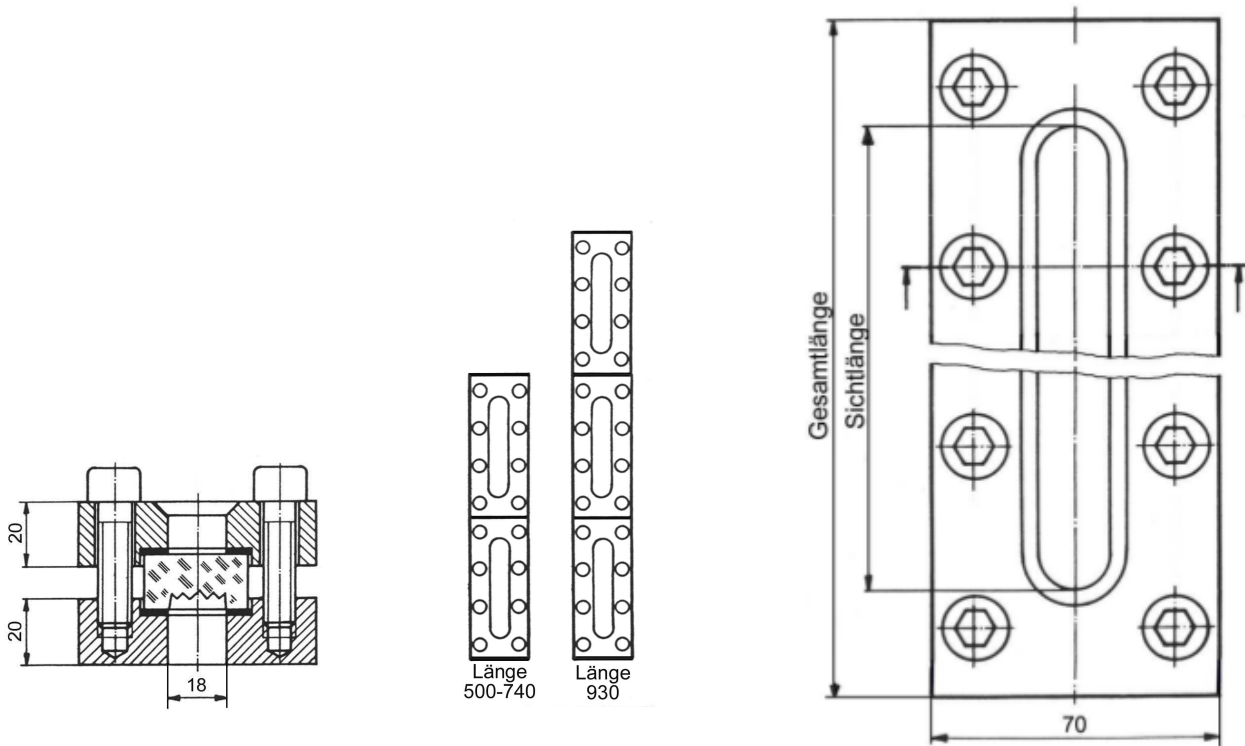
Temperature:

0°C to +150°C

Delivery includes:

Base- & cover flange, glass & sealings

Dimensions:



Length	170	220	250	310	370	500	620	740	930
view length	124	174	204	264	324	454	574	694	884
glass length Lx34x17	140	190	220	280	340	220	280	340	280
Screws Stk.	8	10	12	14	16	24	28	32	42
Torque (Nm)	13-34	13-34	13-34	13-34	13-34	13-34	13-34	13-34	13-34

Article number:

Type	Glass	Version	Size
BS03	00 – borosilicate glass	00 – Standard	01 – 170mm 02 – 220mm 03 – 250mm 04 – 310mm 05 – 370mm 06 – 500mm 07 – 620mm 08 – 740mm 09 – 930mm

Example no. BS03000006:

BS03	00	00	06
-------------	-----------	-----------	-----------

Article no. BS03000006

Sight glass fitting rectangular

Glass: borosilicate glass

Size: 500mm

Image similar, subject change without notice.