

Manual actuators Type HB01 / HB02 / HB03



description:

Manual actuators as lever/notch lever and worm gear for butterfly-valves type AK01 & AK02 to actuate valves manually.

features:

- Material aluminium or steel
- Stainless steel and controlled lever on request
- Grey or yellow handle
- Lever can be locked
- Worm gear made of cast iron
- Self-locking design
- End-limit positions can be adjusted

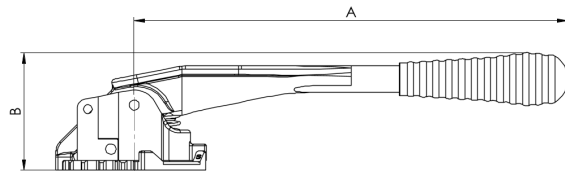
lever HB01

design:

Lever made of aluminium with grey or yellow handle

actuation:

	DN	32 - 100	125 - 150
lever HB01	A lever	200	275
	B lever	76	76
	Weight lever	0,35	0,4



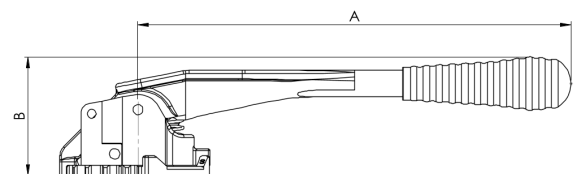
lever HB02:

design:

Lever made of steel with grey or yellow sleeve

actuation:

	DN	32 - 100	125	125 - 200	250	300
lever HB02	A lever	270	270	362	450	750
	B lever	75	75	75	135	135
	Weight lever	1,24	1,26	1,4	2,2	3,10
	Welle	14x14	17x17	17x17	22x22	22x22

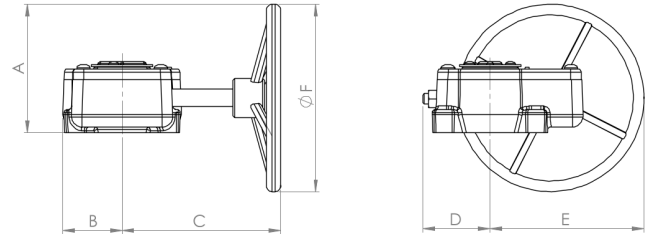


Worm gear HB03:

design: Worm gear cast iron with handwheel

actuation:

DN	32 - 100	125 - 200	250 - 300	350	400
A gear	70	127,5	134	238	341
B gear	35	46	57	67	78
C	91	139	156	255	350
D	38	59	60	131	219
E	84	141	155	267	381
F	100	200	300	400	600
Weight gear	1,2	2,2	4,2	6,5	12,0
stem	14x14	17x17	22x22	27x27	27x27
ISO Flange	F05	F07	F10	F12	F14



torque:

DN	32	40	50	65	80	100	125	150	200	250	300	350	400
Hebel	10	10	12	20	30	55	85	100	150	290	380	580	1200

Article number:

Type	colour	for type	size
HB01 – lever Alu	00 – grey 01 – yellow	00 – AK01-AK02	00 – size 1 (for DN32-DN100) 01 – size 2 (for DN125-DN150)
HB02 – lever steel	00 – grey 01 – yellow	00 – AK01-AK02	00 – size 1 (for DN32-100) 01 – size 2 (for DN125) 02 – size 3 (for DN125-200) 03 – size 4 (for DN250) 04 – size 5 (for DN300)
HB03 – gear cast iron	00 – handwheel 01 – chainwheel*	00 – AK01-AK02	00 – size 1 (for DN32-100) 01 – size 2 (for DN125-200) 02 – size 3 (for DN250-300) 03 – size 4 (for DN350) 04 – size 5 (for DN400)

example Nr. HB01010001:

HB01 | **01** | **00** | **01**

Artikel Nr. HB01010001
 Manual actuation as lever made of aluminium
 colour: yellow handle
 for type: AK01&AK02
 size: size 2 for DN125 – DN150

* gear with chainwheel on request – please tell us your needed chain length.

Image similar, subject change without notice.