

Diaphragm valve stainless steel plastic handwheel TYPE MB02



description:

A diaphragm valve can be used to control the flowrate of a liquid, viscous, aggressive or gaseous media in the field of industrial and pharmaceutical application.

product features:

- suitable for liquid & gaseous media, also for chemically aggressive usage
- precise control for the media, adjusted and locked in over 300 positions
- optimised fluid dynamic design
- flow can be in both directions
- Insensitive to contaminated media
- prevents water- /pressure shocks

connection:

1/2" – 2" inch thread BSP

actuator:

handwheel made of PP-GR

pressure:

PN10

design:

Diaphragm valve with handwheel

material:

Stainless steel 1.4435

diaphragm:

EPDM, PTFE/EPDM one-piece, PTFE/EPDM two-piece

diaphragm dimensions:

DN 25 – 50

Kvs-value m3/h:

7 – 78 m3/h depending on design

actuator:

Handwheel made of PP-GR

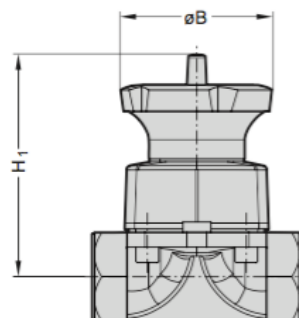
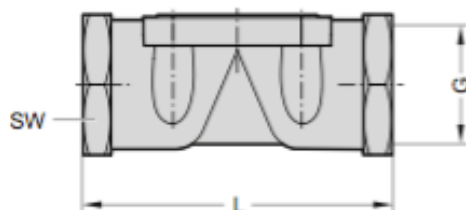
pressure:

PN10

temperature:

-10°C – 80°C

dimensions:



DN	G	diaphragm dimensions	ØB	H1	SW	L	weight	Kv-value
	inch	DN	mm	mm	mm	mm	kg	m ³ /h
15	1/2"	25	100	110	27	85	0,77	7
20	3/4"	25	100	110	32	85	0,81	12
25	1"	25	100	120	41	110	1,03	14
32	1 1/4"	40	140	151	50	120	1,54	-
40	1 1/2"	40	140	153	55	140	1,78	40
50	2"	50	140	176	70	165	3,10	78

article number:

type	material	diaphragm	connection	size
MB02	0 – stainless steel 1.4435	0 – EPDM 2 – PTFE/EPDM one-piece 3 – PTFE/EPDM two-piece	00 – thread BSP	03 – 1/2" 04 – 3/4" 05 – 1" 06 – 1 1/4" 07 – 1 1/2" 08 – 2"

example no. **MB02000006**

diaphragm valve with handwheel
 material: stainless steel 1.4435
 diaphragm: EPDM
 connection: thread
 size: 1 1/4"

Image similar, subject change without notice