

Solenoid-valve type KV05 / KV06



description:

Direct-acting 3/2-way-solenoid valve made of polyamid with mechanic spring return. This valve is usable as pilote valve.

features:

- Suitable for pressure air
- 3/2 – way
- M5 plug
- Installation possible in any position, preferably with solenoid valve upwards

connection:
1/8" inch, 1/4" inch

function:
pilote valve

workpressure:
-0,9 - 10 bar depending on design

component:
body:
connection:

serie KV05
plastic polyamid
screw nickel-plated brass

serie KV06
plastic polyamid
screw nickel plated brass, block
aluminium

connection 1 (inlet):
connection 2 (outlet):
max. pressure:
Kv-value:

G=1/8" inch, 6mm plug
G=1/8" inch
-0,9 – 10 bar
50 l/m

G=1/8" inch
G=1/4" inch
0 – 10 bar
50 l/m

design:
voltage:
power consumption:

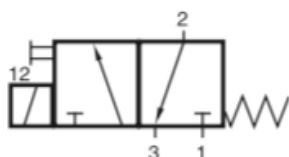
direct acting 3/2-way solenoid valve
230V AC, 24V
230V AC: 5 VA
24V DC: 3 W

function:
temperature:

N. C. normally closed
-10°C up to +60°C (AC) | -10°C up to +50°C (DC)

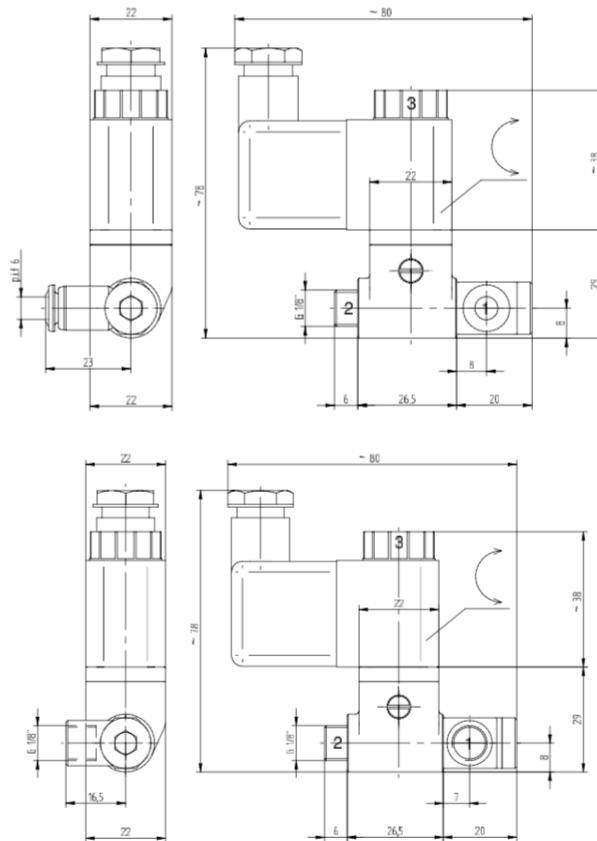
Other connections, voltages, N. O. normally opened version and NPT thread on demand.

schematic:

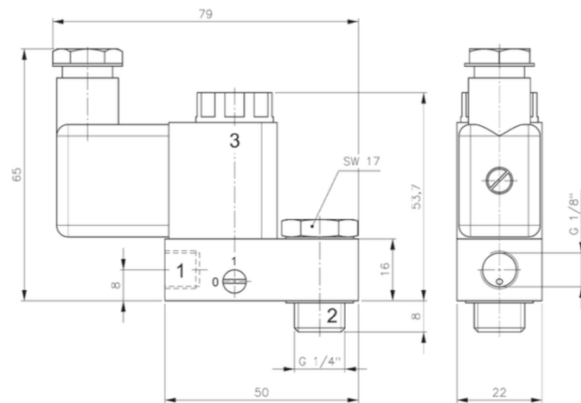


dimensions 3/2 - way:

KV05:



KV06:



article number:

Type	Voltage	Function	Thread
KV05	00 – 230 V	00 – N. C. normally closed	01 – 1/8" x 1/8"
KV06	01 – 24 V		02 – 1/8" x 6mm

example No. KV05000001:

KV05	00	00	01
-------------	-----------	-----------	-----------

3/2 – way pilote valve 230 Volt 1/8" x 1/8"
 connection: 1/8"
 function: N. C. normally closed
 voltage: 230 V

note: KV06 only available with inlet 1/8" inch connection 1.

Image similar, subject change without notice.