

# Compensators TYPE KP01



**description:**

Compensators are used, when vibrations have to be absorbed in a system.

**features:**

- Suitable for liquid media and non-hazardous gases
- Compensation for pipe expansion
- Compensation for misalignment

**connection:**  
DN32 – DN300

**construction:**  
straightway form

**pressure:**  
0 – 16 bar – depending on design

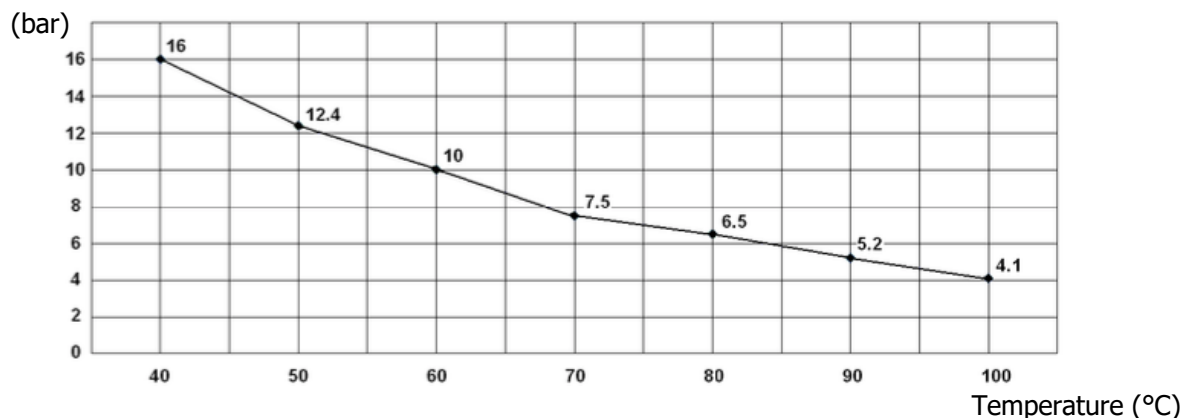
<b>design:</b>	Expansion joint		
<b>connection:</b>	flange DIN EN 1092-1		
<b>flange material:</b>	steel (electro galvanized)		
<b>sleeve:</b>	design 00	EPDM	-10°C - +100°C
	design 01	NBR	-10°C - +80°C
<b>pressure:</b>	PN10/16		

**standards:**

- acc. ISO 9001:2015
- 2014/68/EU

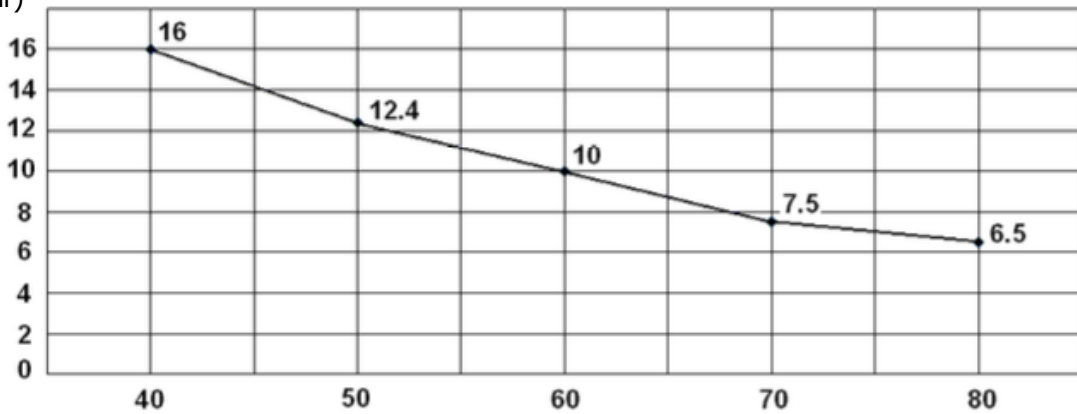
**Pressure / Temperature graph:**

**EPDM**



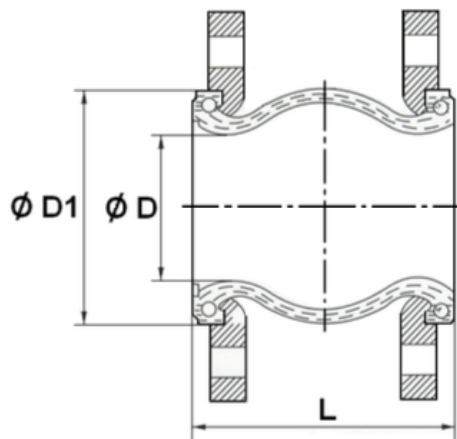
**NBR**

(bar)

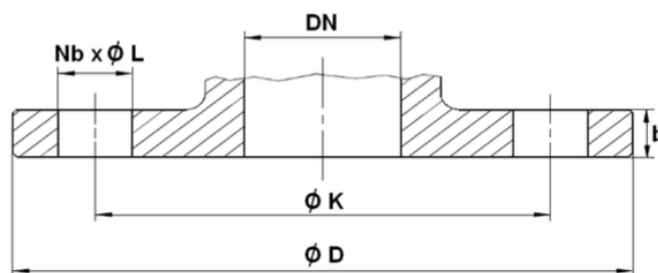


Temperature (°C)

**dimensions**

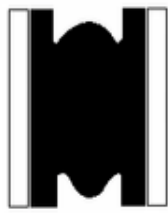


DN	32	40	50	65	80	100	125	150	200	250	300
L mm	95	95	105	115	130	135	170	180	205	240	260
D mm	29	37	47	57	74	91	119	145	199	241	294
D1 mm	69	79	90	108	124	145	179	209	261	320	370
Weig. kg	2,85	3,15	4,15	4,95	6,05	6,95	9,6	11,85	16,9	22,6	25,5



DN	32	40	50	65	80	100	125	150	200	250	300
PN acc. DIN EN 1092	10/16	10/16	10/16	10/16	10/16	10/16	10/16	10/16	10	10	10
D mm	140	150	165	185	200	220	250	285	340	395	445
K mm	100	110	125	145	160	180	210	240	295	350	400
Nb x L	4x19	4x19	4x19	4x19	8x19	8x19	8x19	8x23	8x23	12x23	12x23
b	14	14	15	15	17	17	19	19	20	22	22

**Movements**



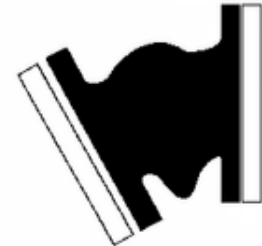
Compansion



Expansion



Lateral



Angular

DN	32	40	50	65	80	100	125	150	200	250	300
Compansion mm	8	8	8	12	12	12	16	16	20	20	20
Expansion mm	4	4	4	6	6	10	10	10	14	14	14
Lateral mm	8	8	8	10	10	12	12	12	18	18	18
Angular	15°	15°	15°	15°	15°	15°	15°	15°	15°	15°	15°

**article number:**

Type	Connection	Sleeve	Size
<b>KP01</b>	<b>00 – Flansch DIN EN</b>	<b>00 – EPDM</b>	06 – DN32
			07 – DN40
		08 – DN50	
		09 – DN65	
		<b>10 – DN80</b>	
		11 – DN100	
		12 – DN125	
		13 – DN150	
		14 – DN200	
		15 – DN250	
		16 – DN300	
		01 – NBR*	

**Example Nr. KP01000010:**

**KP01 | 00 | 00 | 10**

Compensators made of steel (electro galvanized)

Connection: flange acc. DIN EN 1092-1

Sleeve: EPDM

Soze: DN80

\* available up to DN 200

Illustration similar, technical and dimensional changes reserved.