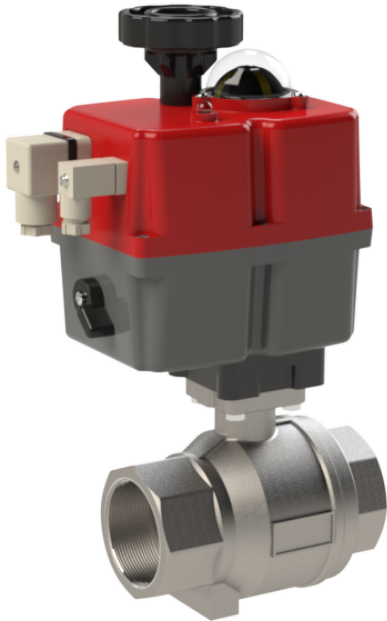


Ball valve made of stainless steel with electrical actuator type EK02



Description:

Two-piece ball valve made of stainless steel with electrical actuator to shut off pipeline systems.

Features:

- suitable for neutral and not neutral **gaseous & liquid media**
- ETL electronic torque limiting
- AVS automatic voltage sensing
- ATC automatic temperature control
- emergency operating
- visual position indicator
- 4 limit switches (2 for motor adjustment, 2 for response)

connection:

1/4" – 2" inch

construction:

Two piece ball valve

pressure:

0 – 40 bar – depending on design

design:

two-piece ball valve with electrical actuator

body:

stainless steel 1.4408

ball:

stainless steel 1.4408

ball seal:

PTFE

stem:

stainless steel 1.4401

stem seal:

Standard: FKM (Maximum differential pressure 7 bar)

DVGW-W: EPDM

nominal diameter:

acc. to DIN 3202 – M3

temperature resistance ball valve:

Standard: -20°C to +180°C* (higher mounting pad for medium temperatures over 70°C necessary)

DVGW-W: 0°C to 65°C*

temperature resistance actuator:

-20°C - +70°C

Certifications:

PED CE-0085 BN 0204, DVGW-G on request

body actuator:

corrosion resistant synthetic body

plug connection:

external acc. to DIN 43650

mounting pad:

acc to. ISO 5211

power supply:

Actuator L 24V AC/DC – Low Version

Actuator 85-240V AC/DC – High Version

Actuator S 24-240V AC/DC – from 1" inch

mounting position:

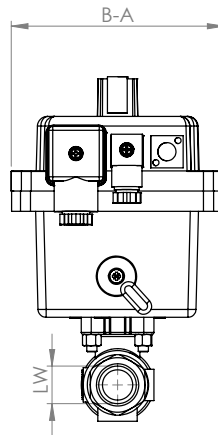
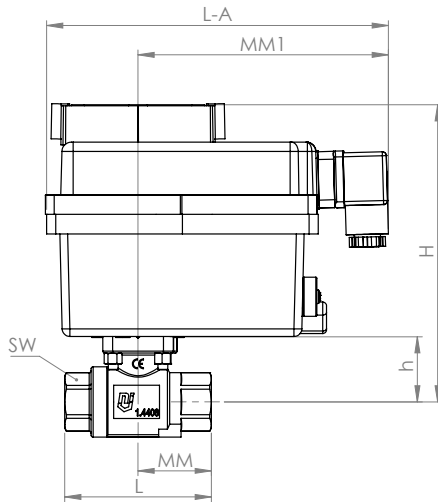
free, not upside down

Other voltages, turning angles, higher pressure or temperatures on request.

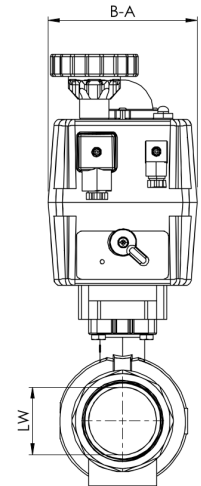
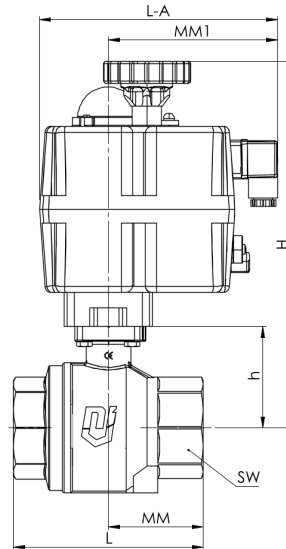
*temperature data based on the operating pressure – please refer to the pressure-temperature diagram on page 3.

dimensions:

with actuator L/H 10:



with actuator S:



Standard:

DN	PN	DIN EN 10226-1	LW	SW	MM	L	h	H	MM1	B-A	L-A	actuator	weight
8	40	Rp1/4"	8	27	37,5	75	33,5	152,5	127	105	175	L/H 10	1,30
10	40	Rp3/8"	10	27	37,5	75	33,5	152,5	127	105	175	L/H 10	1,30
15	40	Rp1/2"	15	27	37,5	75	33,5	152,5	127	105	175	L/H 10	1,25
20	40	Rp3/4"	20	32	40	80	37	156	127	105	175	L/H 10	1,38
25	40	Rp1"	25	41	45	90	50,5	221,5	125	110	176	S20	3,08
32	40	Rp1 1/4"	32	50	55	110	56,5	227,5	125	110	176	S20	3,58
40	40	Rp1 1/2"	40	55	60	120	67	238	125	110	176	S35	4,26
50	40	Rp2"	50	70	70	140	75	271	125	110	176	S55	6,13

DN8 – 1/4" and DN10 – 3/8" are DN15 – 1/2" ball valves with reducing nipple

Please note:

If used with non-greasing media (e.g. water) or high pressures (>7bar differential pressure) a stronger actuator may need to be installed. Please contact us for a configuration.

DVGW-W:

DN	PN	DIN EN 10226-1	LW	SW	MM	L	h	H	MM1	B-A	L-A	actuator	weight
8	10	Rp1/4"	8	27	37,5	75	33,5	152,5	127	105	175	L/H 10	1,40
10	10	Rp3/8"	10	27	37,5	75	33,5	152,5	127	105	175	L/H 10	1,40
15	10	Rp1/2"	15	27	37,5	75	33,5	152,5	127	105	175	L/H 10	1,31
20	10	Rp3/4"	20	32	40	80	37	156	125	110	176	S20	2,33
25	10	Rp1"	25	41	45	90	50,5	221,5	125	110	176	S20	2,79
32	10	Rp1 1/4"	32	50	55	110	56,5	227,5	125	110	176	S55	3,92
40	10	Rp1 1/2"	40	55	60	120	67	238	125	110	176	S55	4,49
50	10	Rp2"	50	70	70	140	75	271	125	110	176	S85	6,54

DN8 – 1/4" and DN10 – 3/8" are DN15 – 1/2" ball valves with reducing nipple

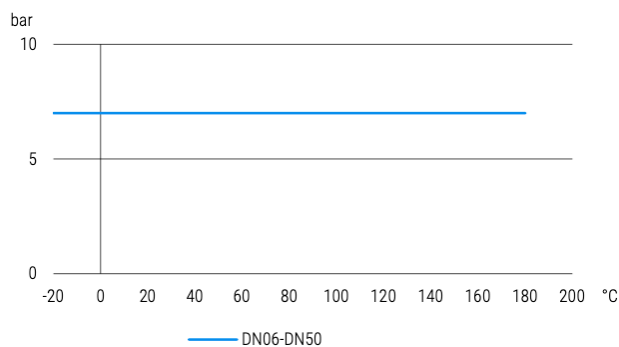
Actuator:

actuator	ISO Flange	octagon mm	protection class	operating factor	power supply				working torque	starting torque	time for of cycle 90° without strain
					24V AC	24V DC	110V AC/DC	240V AC/DC			
L/H10	F03/F05	14	IP65	75%	0,4A (L) / 9,4W	0,4A (L) / 9,4W	0,3A (H) / 30W	0,3A (H) / 60W	10 Nm	12 Nm	L10 = 19 Sek. (+/- 10%) H10 = 16 Sek. (+/- 10%)
S20	F03/F04 /F05	9/11/14	IP67	75%	1,3A / 30,7W	1,0A / 23,4W	0,3A / 32,7W	0,2A / 46,0W	20 Nm	25 Nm	10 Sek. (+/- 10%)
S35	F03/F04 /F05	9/11/14	IP67	75%	1,7A / 40,2W	1,4A / 32,8W	0,4A / 41,9W	0,2A / 46,0W	35 Nm	38 Nm	10 Sek. (+/- 10%)
S55	F05/F07	14/17	IP67	75%	2,0A / 47,5W	1,6A / 39,0W	0,4A / 47,0W	0,2A / 46,0W	55 Nm	60 Nm	13 Sek. (+/- 10%)
S85	F05/F07	14/17	IP67	75%	1,5A / 36,0W	1,2A / 29,3W	0,3A / 36,5W	0,2A / 46,0W	85 Nm	90 Nm	29 Sek. (+/- 10%)

pressure-temperature-diagram:

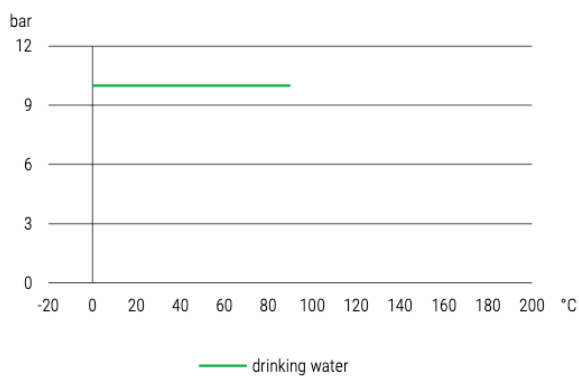
Standard:

Druck-Temperatur-Diagramm pressure-temperature-diagram



DVGW-W (drinking water):

Druck-Temperatur-Diagramm pressure-temperature-diagram



article number:

type	Voltage*	seal	size
EK02	00 – 24V AC/DC	00 – Standard** 01 – DVGW-W	01 – 1/4"
	01 – 85-240V AC/DC		02 – 3/8"
			03 – 1/2"
			04 – 3/4"
			05 – 1"
			06 – 1 1/4"
			07 – 1 1/2"
			08 – 2"

example no. EK02010005:

EK02	01	00	05
-------------	-----------	-----------	-----------

ball valve made of stainless steel with electrical actuator

voltage: 110-240V AC/DC

seal: PTFE

size: 1"

*From actuator size S20, the voltage range is 24V-240V AC/DC. From which diameter (DN) it is included can be found on page 2 in the tables at section "dimensions"

****Please note:**

If used with non-greasing media (e.g. water) or high pressures (>7bar differential pressure) a stronger actuator may need to be installed. Please contact us for a configuration.

Image similar, subject change without notice.